



Wade Street | Lichfield | WS13 6HT

£200,000

 **Webbs**
estate agents

Summary

** NO CHAIN ** CITY CENTRE LOCATION ** FIRST FLOOR APARTMENT ** DECEPTIVELY SPACIOUS ** TWO BEDROOMS ** ENSUITE ** BATHROOM ** PRIVATE OUTDOOR TILED AREA ** IDEAL FOR FIRST TIME BUYERS ** CLOSE TO AMENITIES ** VIEWING ESSENTIAL **

Webbs Estate Agents are delighted to present this deceptively spacious two-bedroom first-floor apartment, ideally situated in the heart of Lichfield City Centre on Wade Street.

Dominium Court offers convenient access to a wide range of local amenities, excellent transport links, and a vibrant selection of cafés, bars, and shops right on the doorstep. This property is perfectly suited to first-time buyers looking to step onto the property ladder.

The accommodation briefly comprises an entrance hall, a generous living and dining area, a well-appointed kitchen, Bedroom One with ensuite, Bedroom Two, and a main bathroom. The main bathroom is fitted with a modern suite, including a bath, wash hand basin, and WC.

Key Features

- NO CHAIN
- CITY CENTRE LOCATION
- FIRST FLOOR APARTMENT
- DECEPTIVELY SPACIOUS
- TWO BEDROOMS
- ENSUITE
- OUTDOOR TERRACE
- IDEAL FOR FIRST TIME BUYERS
- CLOSE TO AMENITIES
- VIEWING ESSENTIAL

Rooms and Dimensions

Hallway

Living Dining Room

20'9 x 13'9 (6.32m x 4.19m)

Kitchen

7'10 x 8'10 (2.39m x 2.69m)

Bedroom 1

8'1 x 10'6 (2.46m x 3.20m)

Ensuite

7'11 x 3'11 (2.41m x 1.19m)

Bedroom 2

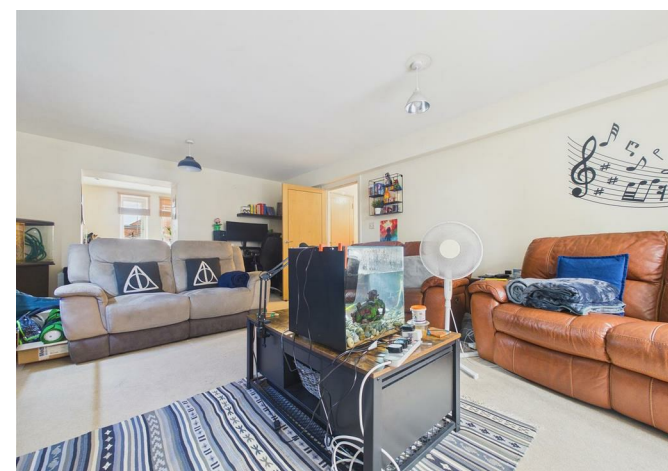
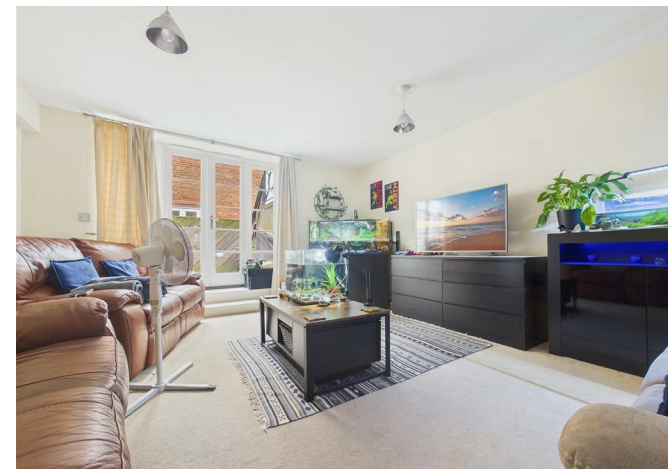
11'7 x 7'9 (3.53m x 2.36m)

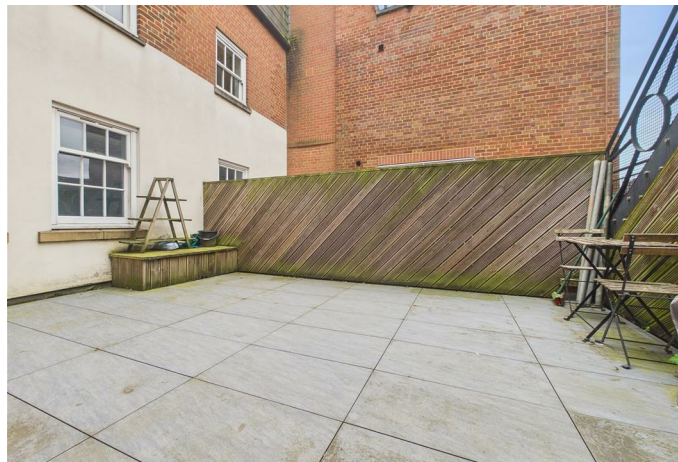
Bathroom

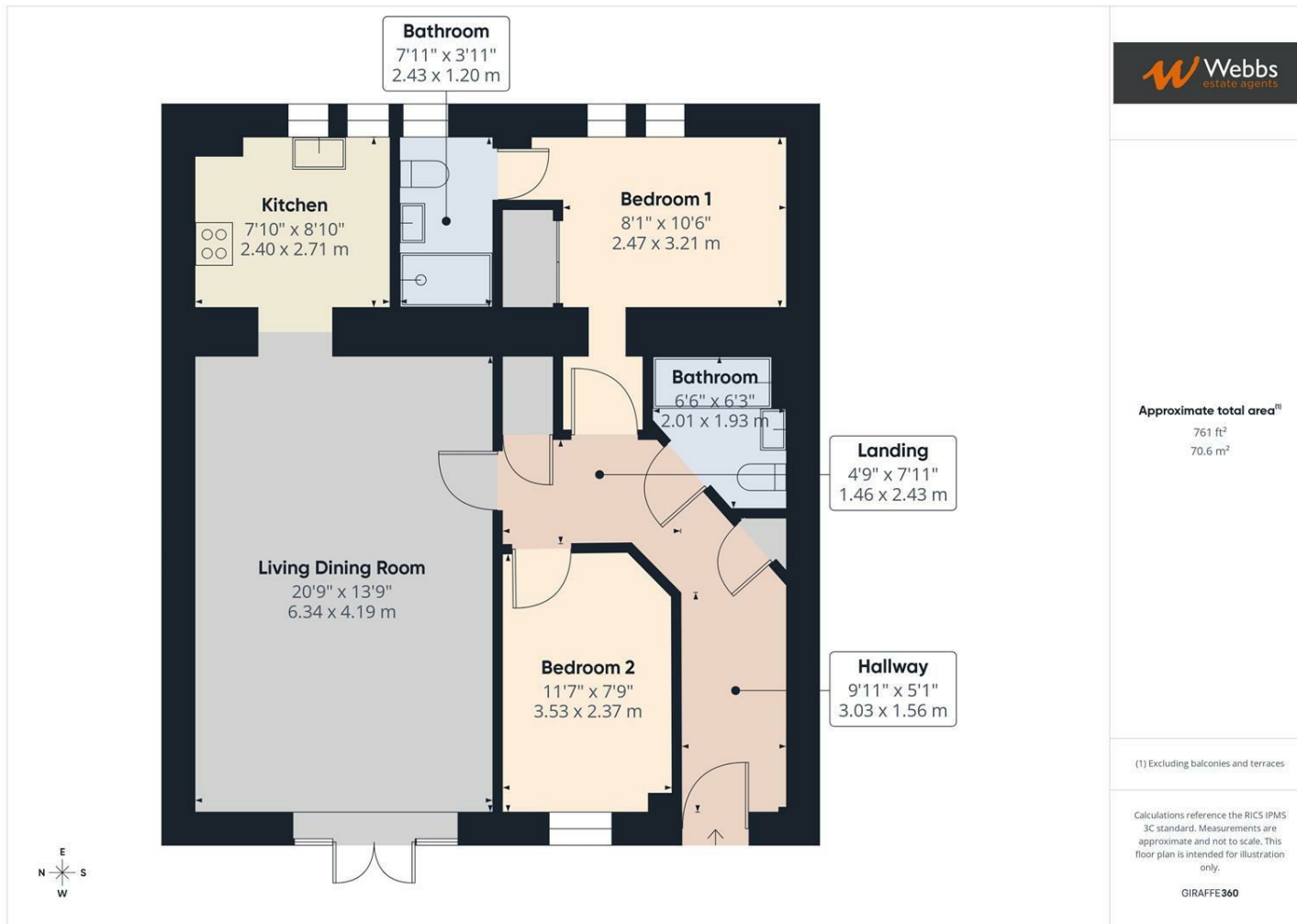
6'6 x 10'6 (1.98m x 3.20m)

AGENTS NOTES

Agents Note







Webbs Estate Agents - endeavour to maintain accurate depictions of properties in Virtual Tours, Floor Plans and descriptions, however, these are intended only as a guide and purchasers must satisfy themselves by personal inspection.

